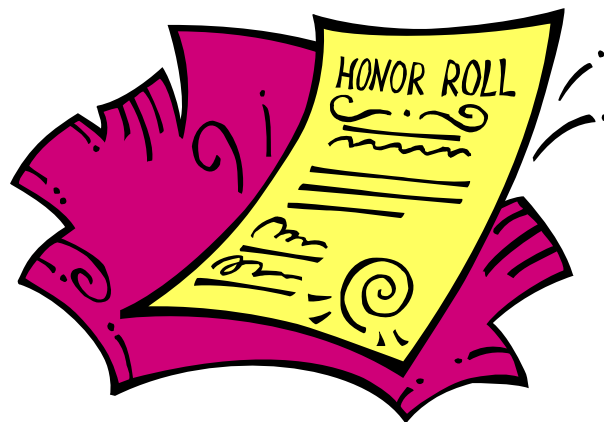


GLASS OF 2012

FRESHMAN PARENT NIGHT



# COUNSELORS

- Mrs. Judy Lee (A-G)
- Mr. Patrick Tubbins (H-N)
- Mrs. Tamara Merricks (O-Z)
  
- Mrs. Natalie Derham  
College Counselor

# **MR. JOHN HISER**

## **PRINCIPAL**

- The mission of Edna Karr High School is to teach all students to be independent, life-long learners and achievers through the involvement of all stakeholders.

# Edna Karr Student Philosophy

**Both the classroom environment and our professional  
focus are:**

- student-centered.
- educate our students
- guide our students toward further education

# Important Dates

- October 22                      1<sup>st</sup> Quarter Report Cards
- January 14                      2<sup>nd</sup> Quarter Report Cards
- March 25                      3<sup>rd</sup> Quarter Report Cards
- May 21                      Last of School

# 5 Year Educational Plan

- All students will plan their courses annually using their Plans. These plans include all courses required for graduation. Parents, Students and Counselors will approve these plans with their signatures each year.
- These plans will include:
  - **Beginning Date the student enters high school**
  - **Name**
  - **Area of Concentration**
  - **Career Cluster**
  - **Diploma Endorsements**
  - **IOWA/ GEE 21 Scores (pass-yes or fail-no)**

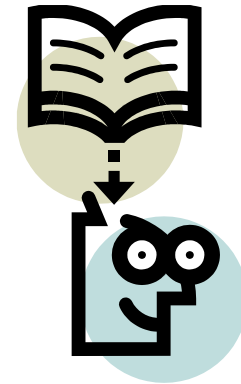
# NEW INFO FOR 9<sup>TH</sup> GRADE

- **Unit of Credit-** the successful completion of two semesters of a course
- **Semester-** 18 weeks of school
  - 36 weeks per semester
  - $\frac{1}{2}$  credit per semester
- **GPA-** grade point average

# GPA

Is calculated by averaging course final grades

90-100	A (4 quality points)
80-89	B (3 quality points)
75-79	C (2 quality points)
76-74	D (1 quality point)



# How are GPA's calculated?



## Honors

A=4.4

B=3.3

C=2.2

D=1.1

## Gifted/ Pre-AP

A=4.44

B=3.33

C=2.22

D=1.11

## AP

A=4.8

B=3.6

C=2.4

D=1.2

# GEE 21

- **TOPS** requires students to pass all 4 components with Approaching Basic **English, Math, Science, Social Studies**
- Important to perform well in your **English & Math** courses because you will be tested in the 10<sup>th</sup> grade.
- **GEE practice tests:** [www.louisianapass.org](http://www.louisianapass.org)
  - » username: student
  - » password: tiger

# LAePortal.com

## You may use this website to:

- Create your 5-year plan
- Build your Portfolio or Resume
- Career Fairs
- Explore Career Clusters
- Watch over 400 career videos
- Tour colleges on-line
- Review college admissions
- Plan Reagent's Core
- Get TOPS information
- Research Financial Aid
- Study with free test prep
- Connect with ACT and SAT information

- Make use of salary browsers
- Browse on-line Career Fairs



# College Readiness

Mrs. Natalie Derham  
College Counselor



# What can I do now to prepare my freshman for college?

- Encourage rigorous curriculum
- Encourage high grades
- Talk about college
- Visit colleges (during holidays, summer)
- Attend recruitment events at colleges (Get to Know UNO Day on Saturday, October 4 from 10-2)
- Attend sporting events, etc. at colleges (football games)

# TOPS Required Curriculum

## 2008-2009 Freshman

- 4 units of English
- 4 units of Science
- 1 unit of Physical Education and  $\frac{1}{2}$  unit of Health
- 2 units of Foreign Language
- 1 unit of Fine Arts or 1 unit of Art, Dance, Music or Theatre
  - » **OR**
- 1 unit of Computer Related Course
- 4 units of Math
- 4 units of Social Studies
- 1 unit of ACT Prep/Speech